

War FTP Daemon - Installation Instructions and Copyright Information

Installation Instructions

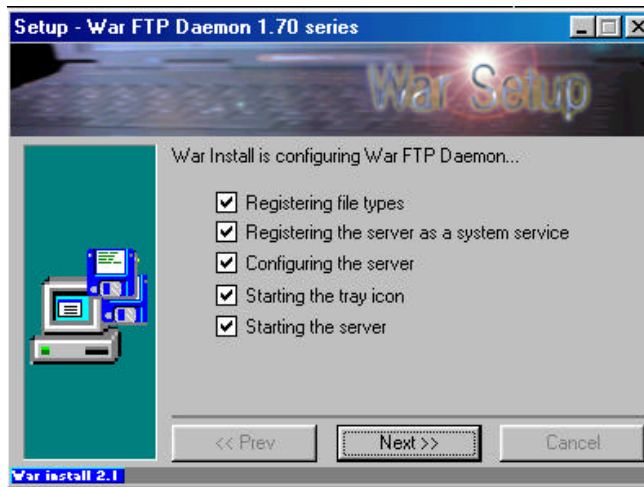
1. Download this program, **warftpd-1.82-00-RC2-i386.exe**, to your STRT PC.
2. Double click on the **warftpd-1.82-00-RC2-i386.exe**, this will open the War Unzipper application.
3. In the War Unzipper window, click Install. Setup “War FTP Daemon 1.70 series” displays. Click Next
4. Select the installation directory. Use the default installation directory. Click Next
5. Select “Normal” installation, Click Next
6. Check “Add Start Menu Items”. Click Next.
7. Click Next Again.

Initial Sever Configuration Steps

1. Check “New Installation”. Click Next
2. Name the FTP Server - any name can be used, but you should call it something meaningful like ‘STRFTFP’. Do not use the default “Jgaa’s Fan Club FTP Service”. Click Next.
3. Check “Run As System Service”. Click Next
4. Tag = default “WARSVR”. Click Next.
5. File System Root - leave as the default “C:\program_files\war-ftp\ftproot”. Click Next.
6. **Uncheck** - “**Allow anonymous access**”. Checked is the default
Uncheck - “List contents”. Unchecked is the default.
Uncheck - “Allow Download”. Unchecked is the default.
Click Next
7. System Password - your choice, but try to make it hard to hack i.e. At least 8 alphanumeric characters, use at least a couple of numbers in the password, avoid words or names. Click Next.
8. E-mail - enter your e-mail address. Click Next
9. Port = 21. Click Next.
10. Go = Next



11. The program will start to install - Checks will display to alert you to the install status.

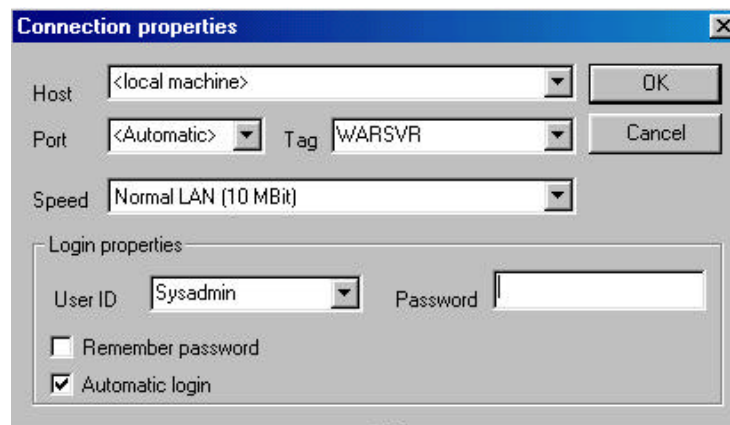


12. When all the boxes are checked, click next, a 'Smiley Face' will display.

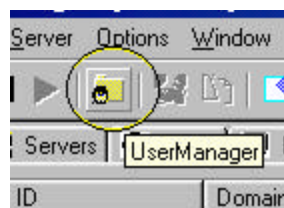


Click Finish.

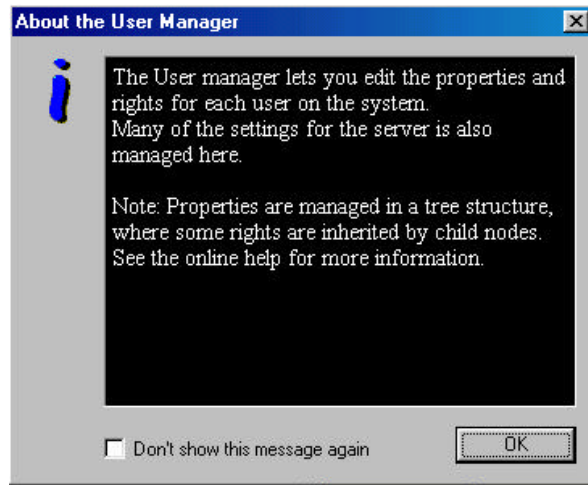
13. "Connection Properties" will display. Enter the password you created in Step 7, Check "remember password".



14. Next you must add users. Click on "User Manager".



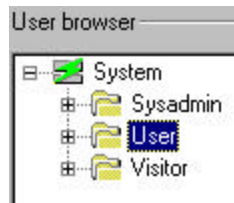
15. The following displays. Click OK:



16. Click on the “+” sign to open the “System” folder.



a. Then highlight the 'User' folder

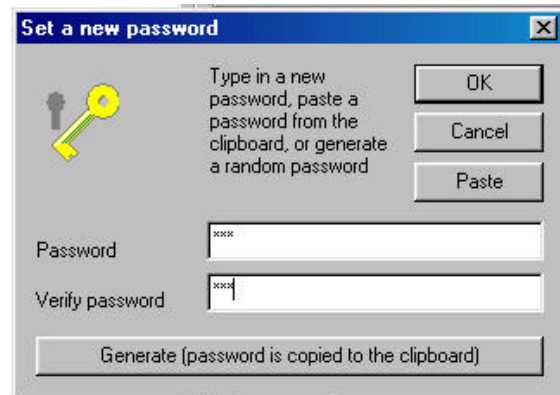
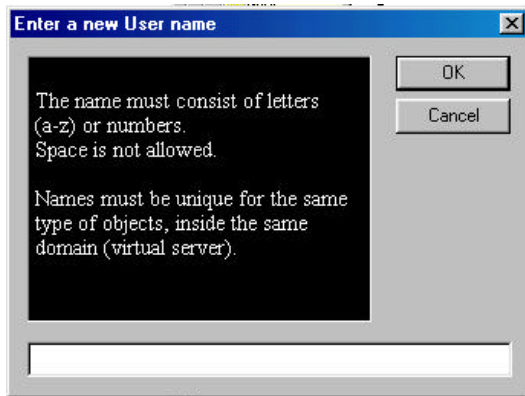


b. With the “User” folder highlighted, Double click on the “red dot” next to “FTP Login Access”. The “red dot” will change to a “green dot”.

Access	Value	Allow
FTP login access	deny	no
Server admin access	deny	no

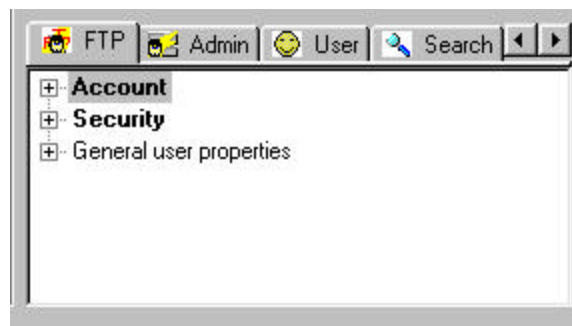
Access	Value	Allow
FTP login access	allow	yes
Server admin access	deny	no

17. Hover over the “User” folder, then right click. This will display a dialog box. Choose “Add User”



Enter a new User Name and User Password. The name and password entered in this step will also be used in setting up Code EFTP on the RS6000, so both of these fields must be 8 characters or less, otherwise, this can be anything you want, but make it meaningful. Record these entries at the end of the manual, under RS 6000 EFTP Setup.

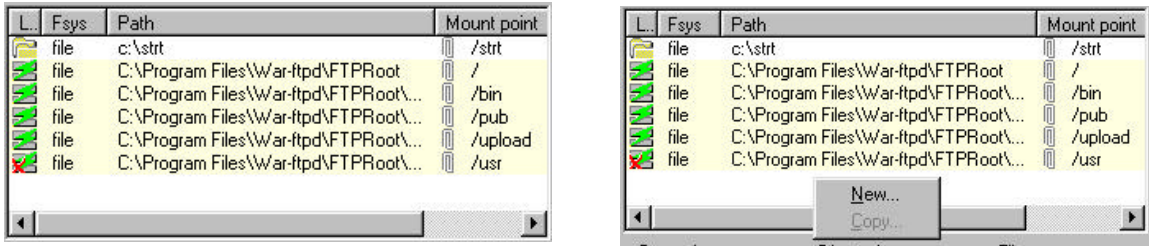
18. Click on the “+” sign to open the “Security” folder



19. Highlight “File Access”, note that when you highlight “File Access” a list of path names will display right above.

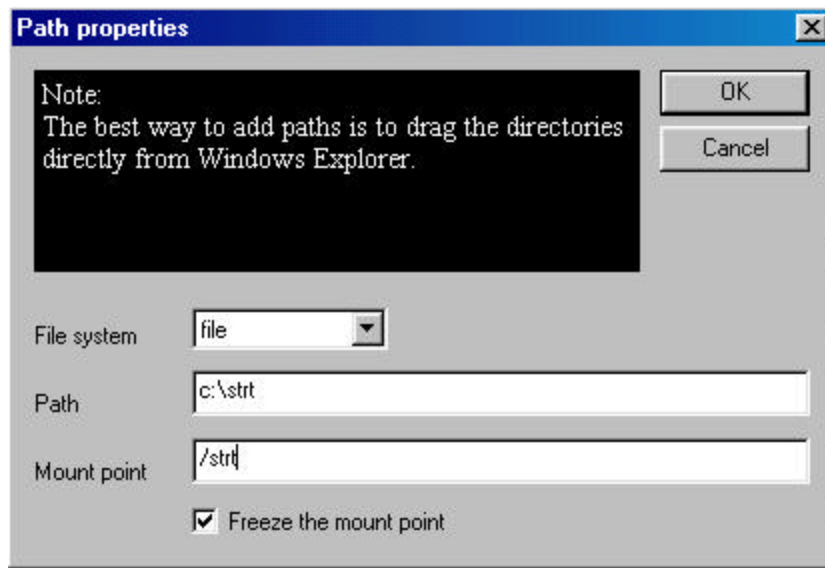


20. Hover over the list of path names, right click, then select “New”

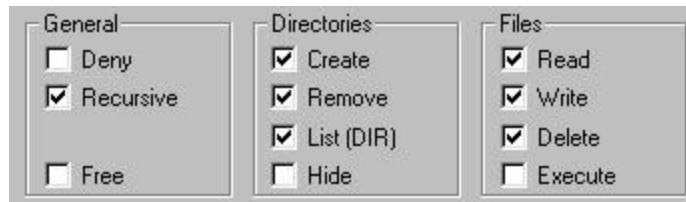


21. You must configure the “Path Properties”

- a. File System = File
- b. Path = the pathway to the STRT program, “c:\strt”
- c. Check “Freeze the mount point”
- d. In the field “Mount Point” enter “/STRT”. In the EFTP setup on RS6000, you will enter “/STRT” or whatever path was entered under “mount point”. Record this entry at the end of the manual, under RS 6000 EFTP Setup. Click “OK”



22. Highlight the new path you created in the previous step. This will allow you access to the General, Directories and Files option check boxes.



23. Under “General”, check “recursive”

24. Under Directories,
Check “Create”

Check "Remove"
Check "List(DIR)"

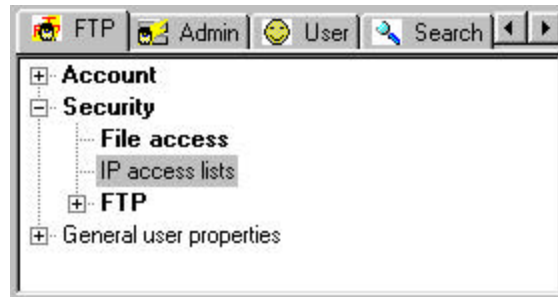
25. Under Files

Check "Read"

Check "Write"

Check "Delete"

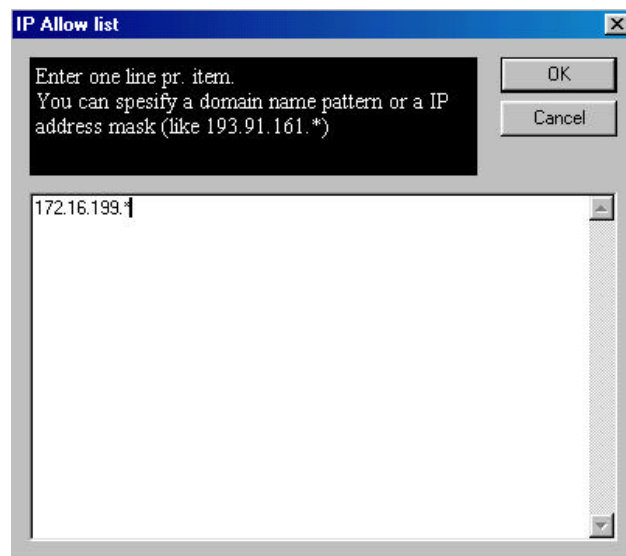
26. Highlight "IP Access Lists"



27. Click "Add" under "Domains to Allow".



The following window will display.



28. All agencies except 151, must key in the following: "172.16.XXX.*", where XXX = agency number. The "*" is a "*", it does not stand for anything. Agency 151 must use "192.168.1.*".

29. Click "Close". The installation is complete, go have a beer.

RS 6000 EFTP Setup

Login id (User Name, see step 17) : _____

Password (see step 17): _____

File Path (see "mount point" from step 21 d): _____

Copyright Information

War Software series

Copyright (C) 1996 - 2003 by Jarle (jgaa) Aase (www.jgaa.com).

This program is free software; you can redistribute it and/or modify it under the terms of the GNU General Public License as published by the Free Software Foundation version 2 of the License - WITH THE FOLLOWING RESTRICTIONS:

* GOVERNMENTS, GOVERNMENTAL AGENCIES OR COMMERCIAL COMPANIES OWNED 50% OR MORE BY THE GOVERNMENT ARE NOT ALLOWED TO USE THE SOFTWARE OR SOURCE CODE FOR ANY PURPOSE. THIS RESTRICTION ALSO APPLIES FOR PROGRAMS DERIVED FROM THE SOURCE CODE, OR PROGRAMS/SOURCE CODE THAT USE SPECIAL TECHNICS/ALGORITHMS INVENTED IN THIS SOFTWARE.

* THE FULL SOURCE CODE IS WITHHELD FROM A PUBLIC RELEASE UNTIL THE LINUX VERSION IS RELEASED.

This program is distributed in the hope that it will be useful, but WITHOUT ANY WARRANTY; without even the implied warranty of MERCHANTABILITY or FITNESS FOR A PARTICULAR PURPOSE. See the GNU General Public License for more details.