

1. Odrezati odgovarajuću dužinu kabla:



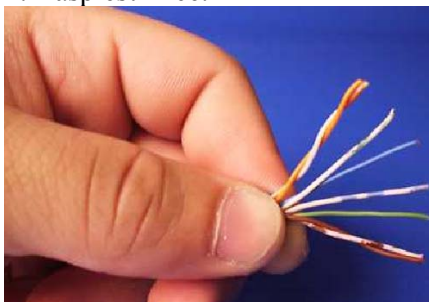
2. Skinuti 1,5 do 2 cm zaštitnog omotača:



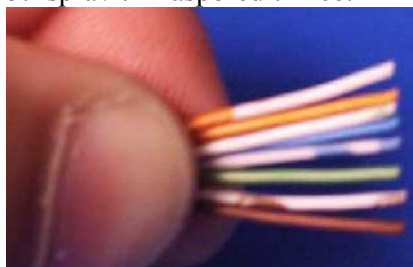
3. Razdvojiti žice:



4. Rasplesti žice:



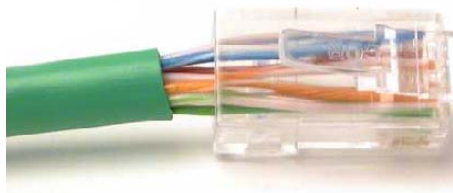
5. Ispraviti i rasporediti žice:



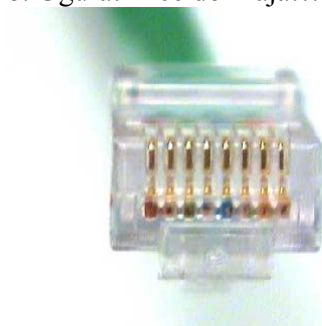
6. Skratiti žice na potrebnu dužinu (1,25 cm)



7. Nabaciti konektor



8. Ugurati žice do kraja!!!



9. Još jednom provjeriti raspored boja:



10. Pritegnuti konektor odgovarajućim kliještima (CRIMP)



11. Vizuelno provjeriti ispravnost oba kraja kabla.



12. Provjeriti ispravnost kabla uz pomoć mjernog instrumenta (Cable Tester) FLUKE

